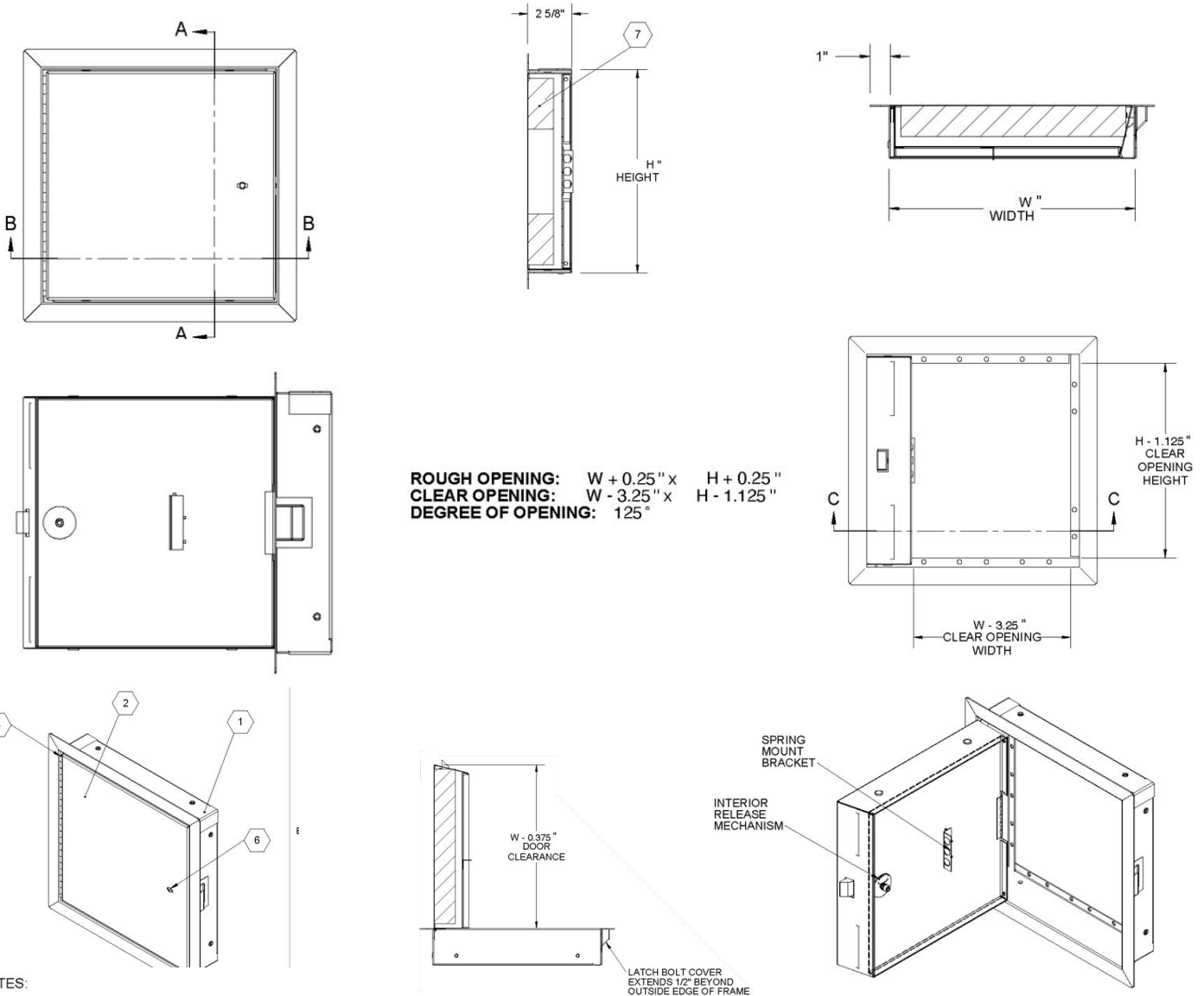


Technical Drawing

36 SERIES INSULATED ACCESS DOOR



NOTES:

- ① **FRAME:** Cold Rolled Steel 16 ga
- ② **DOOR:** Cold Rolled Steel, 20 ga
- ③ **FINISH:** White Powder Coat
- ④ **HINGE:** Flush Continuous Hinge
- ⑤ **SECONDARY LATCH:** Varies
- ⑥ **LOCK:** Knurled Knob/Keyed Slam Latch
- ⑦ **INSULATION:** 2" Thick Fire Rated Mineral Wool, 8 R-Value

HORIZONTAL
1 HR WOOD-FRAME CONSTRUCTION
3 HR NON-COMBUSTABLE CONSTRUCTION
ON SIZES UP TO AND INCLUDING 24" W X 36" H.

VERTICAL
1-1/2 HOUR "B" LABEL

