

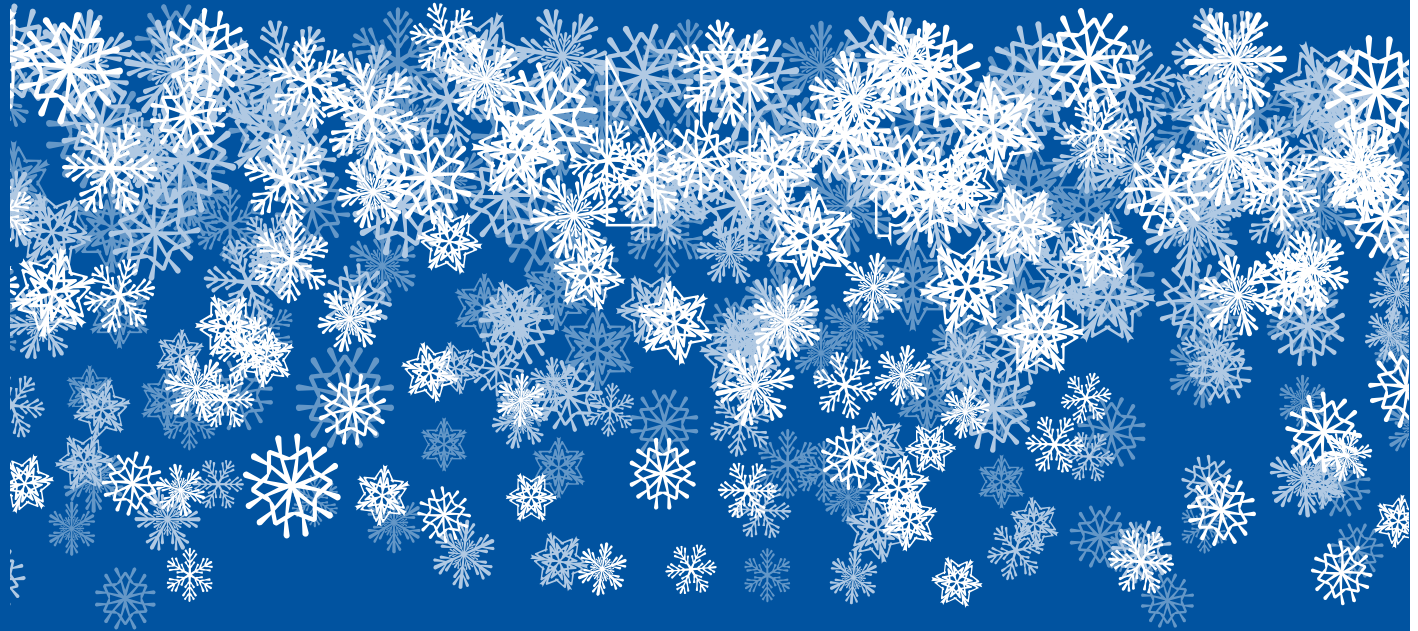


Toll Free Phone: 800.263.7011  
Toll Free Fax: 800.459.6227

Toll Free Phone: 800.361.3773  
Fax: 905.625.9481

PART / PIÈCE # 49005

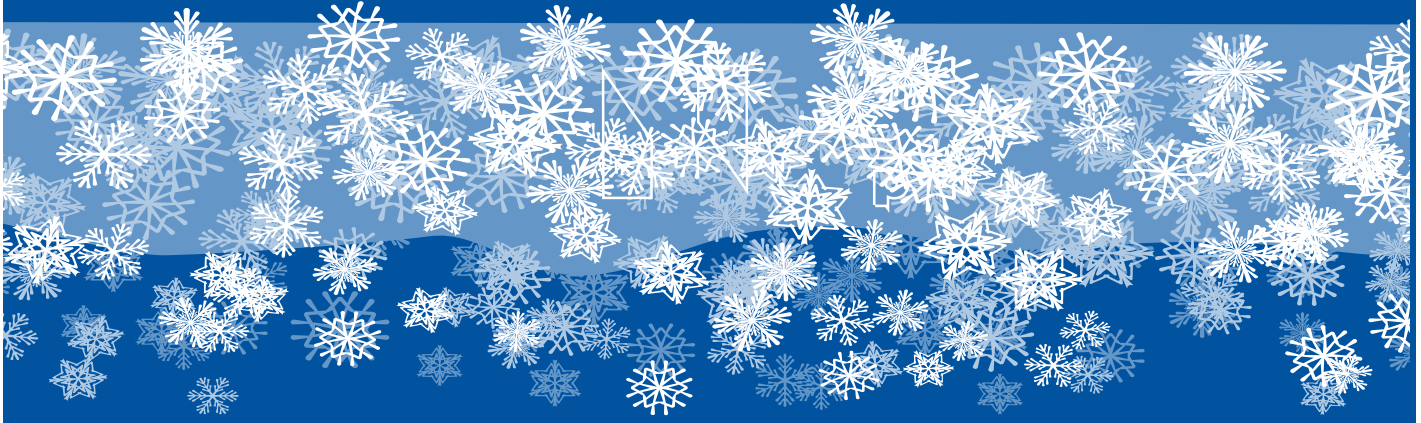
## FIREFIGHTER ELIMINATOR UL ANTIFREEZE



**FireFighter**<sup>®</sup> HIGH-PERFORMANCE ANTIFREEZE FOR FIRE SPRINKLER SYSTEMS

# ELIMINATOR

CORROSION INHIBITOR AND MICROBIOLOGICAL PROTECTION FOR ALL APPROVED PIPES **1330**<sup>™</sup>



[www.lyncarfire.com](http://www.lyncarfire.com)

## FIREFIGHTER ELIMINATOR UL ANTIFREEZE

### **FireFighter ELIMINATOR 1330**

FireFighter Eliminator 1330 is a UL-listed Factory Pre-Mixed Antifreeze for Wet Fire Sprinkler Systems. FireFighter Eliminator 1330 is a non-toxic antifreeze solution designed specifically for use in wet fire sprinkler systems. Use in place of water in sprinkler systems where freezing may either cause damage or interfere with the functioning of systems or equipment and/or toxicity to humans or animals is a concern. The following materials are compatible with FireFighter Eliminator 1330: Steel Piping, Brass Materials, Stainless Steel Piping, Black Steel, Copper, Bronze, Cast Iron, CPVC, PEX, EPDM, Natural Rubber, Nitrile Rubber, Styrene Butadiene Rubber, Fusion Bonded Epoxy Coated Ductile Iron, Butyl Rubber

When using glycerine in metallic pipe systems, or any situation where threaded connections exist, be aware that the molecular structure of glycerine relative to water may allow glycerine to seep out of connections which are loose or poorly sealed, even if water alone does not seep out of the system. Seepage will reduce glycerine concentration and decrease the level of freeze protection.

#### **UNDERWRITERS LABORATORIES AND WHY BEING LISTED IS IMPORTANT**

Effective October 1, 2022, wet fire sprinkler systems utilizing antifreeze will be limited to the use of an agency-listed product. Noble Company has developed a high-performance antifreeze that meets UL2901 standards, while offering a unique level of protection for multiple threats to fire sprinkler systems. FireFighter Eliminator 1330 combines superior freeze protection with a bio-static MIC corrosion preventative, neutralizing any concerns over the two biggest threats to wet fire sprinkler systems; failure due to freezing and microbiologically influenced corrosion.

#### **MIC PROTECTION**

FireFighter Eliminator 1330 contains MIC Preventative and Corrosion Inhibitors. Microbiologically influenced corrosion (MIC) is metal deterioration and corrosion as a result of the metabolic activity of various microorganisms. This type of corrosion applies to non-metallic objects as well as metals.



Antifreeze Solutions for Use  
in Fire Sprinkler Systems  
File #EX28252



FBC™ System Compatible indicates that this product has been tested, and is monitored on an ongoing basis, to assure its chemical compatibility with FlowGuard Gold®, BlazeMaster® and Corzan® pip and products made with TempRite®

# NON-TOXIC

# MIC PREVENTATIVE

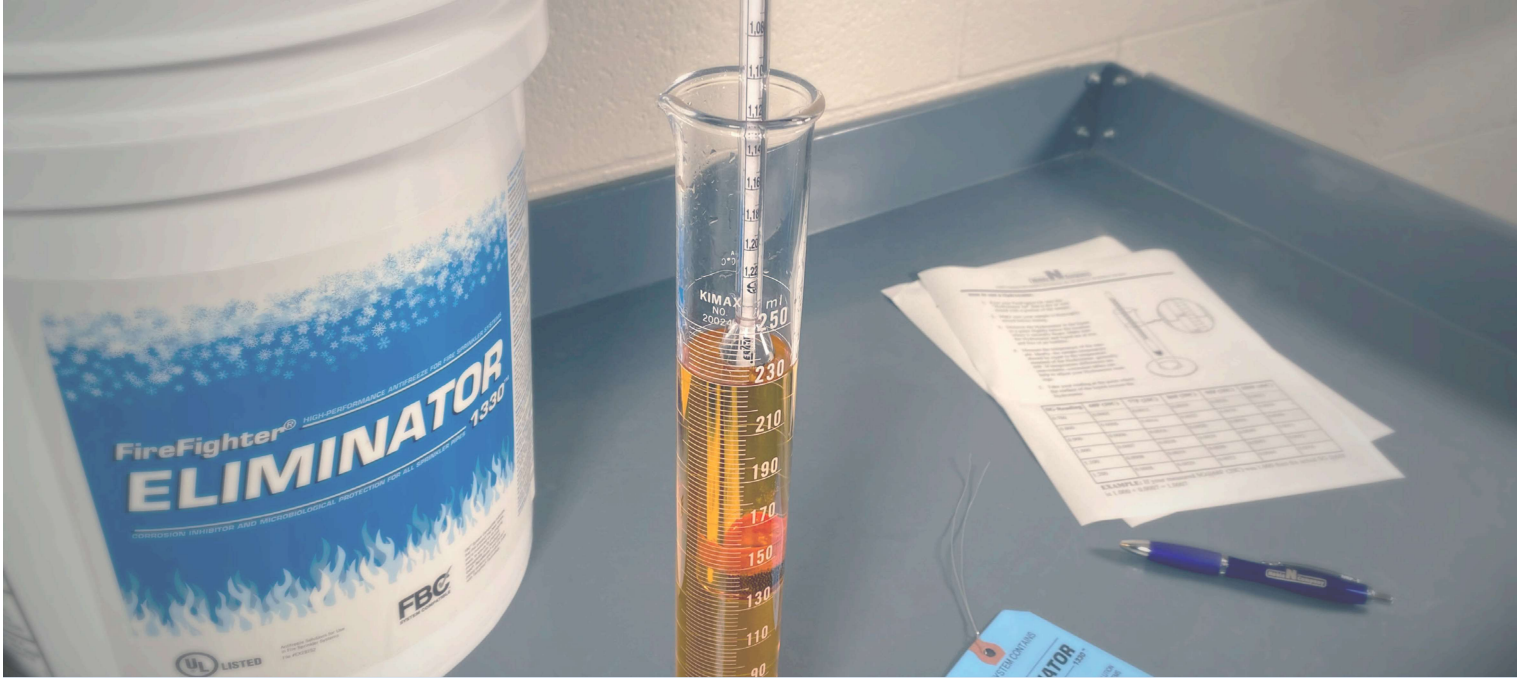
# FREEZE POINT: -20°F

# CORROSION INHIBITOR

## TYPICAL PROPERTIES

<b>Appearance</b>	Liquid, Orange
<b>Freeze Point</b>	-20°F (-28°C)
<b>Minimum Use Temp</b>	-17°F (-27.2°C)
<b>Density at 77°F (25°C)</b>	69.75 #/ft <sup>3</sup> (1.118 gr/ml)
<b>pH</b>	7.8 - 10.0 at 68°F (25°C)
<b>Conductivity</b>	5959-6999 μS/cm
<b>Specific Gravity</b>	1.142 - 1.158 at 77°F (25°C)
<b>Viscosity</b>	7.7 cps at 70°F (21.1°C) 151.5 cps at -17°F (-27.2°C)
<b>Pour Point</b>	-14.8°F (-26°C)

# COMPATIBLE WITH ALL APPROVED PIPES



Chemicals which compose FireFighter Eliminator 1330 can break down over time.

**NFPA 25 requires that the freezing point of the system be tested at least once a year.**

Periodic testing of systems is critical to maintaining the proper concentration and freeze point of the fluid. Leaks, pressure surges, and temperature changes to the system can cause antifreeze to flow out of the system or water to flow into the system changing the freeze temperature.

**TESTING FIREFIGHTER ANTIFREEZE**

To test the freeze protection level of FireFighter Eliminator 1330, a laboratory-grade hydrometer must be used.

When testing indicates that the solution has fallen out of the acceptable range for specific gravity, drain the system according to NFPA requirements and replace with new FireFighter Eliminator 1330 according to the current written installation instructions and all NFPA requirements.

Do not add concentrate or dilute.

For further information concerning correct testing procedures and test instruments, contact our technical services department at (800) 878-5788 or visit our website at [www.noblecompany.com](http://www.noblecompany.com).

**TESTING ACCESSORIES**

**HYDROMETER**

- For testing the freeze point
- Use for testing glycerine
- Available for purchase through Noble Company



**NFPA REQUIRES A TAG** to be affixed to the riser indicating the date tested or replaced, the type and concentration by volume of fluid used, system capacity (in volume), contractor name and license number, and a statement indicating if the entire system was drained and replaced with antifreeze. Tags are available free of charge from Noble Company or your local FireFighter Eliminator 1330 distributor.



## SYSTEM REQUIREMENTS, LIMITATIONS, & CAUTIONS

All fire protection sprinkler systems that use FireFighter Eliminator 1330 should conform to local, state, and NFPA requirements. The use of antifreeze within these systems should also conform to NFPA requirements.

Use of antifreeze solutions should also be in conformance with any state or local health codes. Please contact your local health authorities if you have any questions concerning the codes in your area.

### Copper Tube Type L

Tubing Size	Gallons of Fluid/100 ft.
½"	1,210
¾"	2,510
1"	4,280
1 ¼"	6,520
1 ½"	9,250
2"	16,060
2 ½"	23,780

### Schedule 40 Pipe

Tubing Size	Gallons of Fluid/100 ft.
1"	4.82
1 ¼"	8.29
1 ½"	11.107
2"	18.42
2 ½"	24.87
3"	38.40
4"	66.13

### CPVC Pipe

Tubing Size	Gallons of Fluid/100 ft.
¾"	3,188
1"	5,018
1 ¼"	7,997
1 ½"	10,471
2"	16,369
2 ½"	23,953
3"	35,530

### PEX Tubing

Tubing Size	Gallons of Fluid/100 ft.
⅜"	0.50
½"	0.92
⅝"	1.34
¾"	1.83
1"	3.03

Numbers are approximate as per ASTM requirements. Dimensional data is subject to manufacturing tolerances and may vary by brand.

## FireFighter Eliminator 1330 INSTALLATION INSTRUCTIONS EXCERPT

FOR COMPLETE INSTALLATION INSTRUCTIONS, REFER TO THE FIREFIGHTER ELIMINATOR 1330 DESIGN AND INSTALLATION INSTRUCTIONS

### EXISTING SYSTEMS:

- 1. INSPECT ALL SPRINKLERS** for mechanical damage, corrosion, and evidence of leakage. If any of these conditions are present, replace the sprinkler per NFPA 25.
- 2. VERIFY THE REQUIRED BACKFLOW PREVENTION** and cross connection control is in accordance with state and local requirements.
- 3. THE SYSTEM SHOULD BE AIRTIGHT** to prevent leakage. Air vents are recommended to reduce the oxygen in the system.
- 4. DRAIN THE EXISTING ANTIFREEZE** from the system in accordance with NFPA 25. Flush with water and drain.
- 5. IT IS RECOMMENDED THAT PRIOR TO FILLING THE SYSTEM** with ELIMINATOR 1330 antifreeze, the antifreeze is tested to verify that the specific gravity or refractive index is within the ranges specified in **Table 2\***. If the antifreeze solution is from a new, unopened factory container, this test verification is not required. If the solution is discolored or the container has dirt present, contact Customer Services.
- 6. FILL THE SYSTEM WITH ELIMINATOR 1330 ANTIFREEZE.** Avoid the use of contaminated hoses and equipment that have come into contact with fluids other than ELIMINATOR 1330 antifreeze or water. The use of a pump with a backflow preventer and pressure capabilities to get the system to the supply pressure is recommended. For ELIMINATOR 1330 antifreeze to work correctly, purge as much air as possible from the system. Accelerated corrosion may occur where air pockets exist in the system.
- 7. AFTER FILLING THE SYSTEM WITH ELIMINATOR 1330 ANTIFREEZE,** test the system to verify the solution has not been diluted. Take samples of the solution from a high and low point in the system. If the specific gravity is not within the allowable range, drain the system and repeat the steps or add ELIMINATOR 1330 antifreeze to displace the non-compliant antifreeze and achieve the required purity. Repeat the required tests to verify the specific gravity are within the acceptable range. Repeat this process until the specific gravity are within the acceptable range.

*If the test results are NOT within the designated ranges, contact Noble Company technical support at (800) 878-5788.*

### NEW SYSTEMS:

- 1. THE SYSTEM SHALL BE INSTALLED** with materials as indicated in the compatibility list.
- 2. VERIFY THE REQUIRED BACKFLOW PREVENTION** and cross connection control is in accordance with state and local requirements.
- 3. THE SYSTEM SHALL BE OUTFITTED** with air vent valve(s) and fluid sampling valve connections as required by the applicable NFPA standard.
- 4. THE SYSTEM SHOULD BE DETERMINED TO BE AIRTIGHT** prior to introducing ELIMINATOR 1330 antifreeze into the system to prevent loss or spillage of product.
- 5. A PRESSURE TEST SHALL BE CONDUCTED** in accordance with the applicable NFPA standard. This pressure test may be performed with water or ELIMINATOR 1330 antifreeze. It is recommended that systems with drops be tested with ELIMINATOR 1330 antifreeze to prevent the accumulation of water in the drops. *Note: The water shall be completely removed from the system prior to introducing ELIMINATOR 1330 Antifreeze to the system.*
- 6. FOR SYSTEMS HYDROSTATICALLY TESTED WITH WATER,** the system must be drained after the test in accordance with the applicable NFPA standard.
- 7. IT IS RECOMMENDED THAT PRIOR TO FILLING THE SYSTEM** with ELIMINATOR 1330 antifreeze, the antifreeze is tested to verify that the specific gravity is within the ranges specified in **Table 2\***. If the antifreeze solution is from a new, unopened factory container, this test verification is not required. If the solution is discolored or the container has dirt present, contact Customer Services.
- 8. FILL THE SYSTEM WITH ELIMINATOR 1330 ANTIFREEZE.** Avoid the use of contaminated hoses and equipment that have come into contact with fluids other than ELIMINATOR 1330 antifreeze or water. The use of a pump with a backflow preventer and pressure capabilities to get the system to the supply pressure is recommended. For ELIMINATOR 1330 antifreeze to work correctly, purge as much air as possible from the system. Accelerated corrosion may occur where air pockets exist in the system.
- 9. AFTER FILLING THE SYSTEM WITH ELIMINATOR 1330 ANTIFREEZE,** test samples from the system to verify the solution has not been diluted. Take samples of the solution from a high and low point in the system. If not done so beforehand with water, perform the hydrostatic pressure test as applicable.

*\*TABLE 2 can be found in the separate installation instructions document*



## SAFE & NON-TOXIC

Non-toxic means the antifreeze does not pose a risk of adverse effects in humans or the environment following short-term exposure in scenarios related to fire sprinkler system installation, maintenance, and discharge.

## TOXICOLOGICAL, ENVIRONMENTAL, & HEALTH INFORMATION

FireFighter Eliminator 1330 is virtually harmless to animals and plants. The disposal of this material should be in conformance with national, state, and local health codes.

## TECHNICAL SUPPORT

Specifications, installation design, installation techniques, and unique applications will be reviewed upon request.

Address inquiries **ATTN: FireFighter Technical Support**, Email: [sales@noblecompany.com](mailto:sales@noblecompany.com), or phone us at: **(800) 878-5788**.

Additional product information and Safety Data Sheet are available immediately through our website at [www.noblecompany.com](http://www.noblecompany.com).

Field services are available through factory representatives and Noble Company staff.

Contact Noble Company for your local representative.