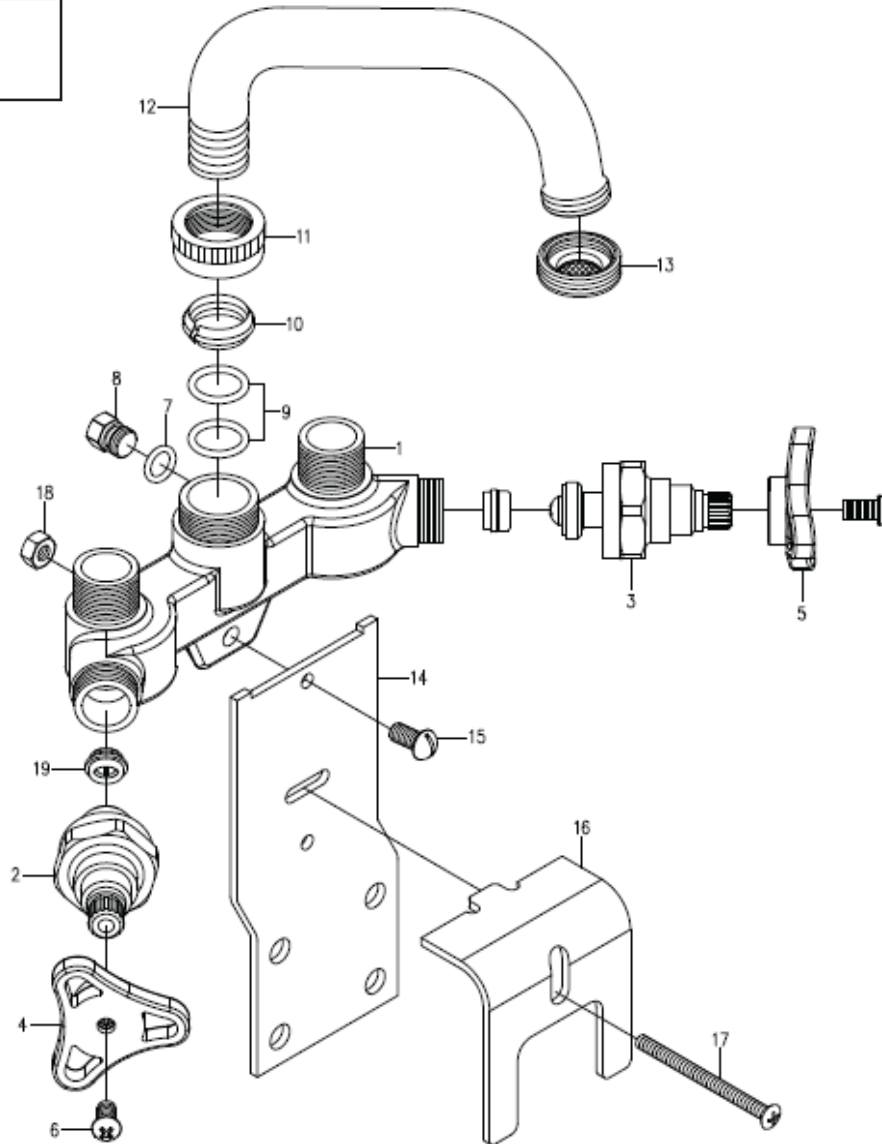


APPROVAL LOGO



NO	Name	Material	Quality
1	Body	Brass	1
2	Hot cartridge	Brass	1
3	Cold Cartridge	Brass	1
4	Hot handle	Plastic	1
5	Cold Handle	Plastic	1
6	Screw	Brass	2
7	O-Ring	Rubber	1
8	Plug	Brass	1
9	O-ring	Plastic	2
10	O-ring	Plastic	1
11	Spout nut	Brass	1
13	Aerator	Brass	1
14	Clamp	Steel	1
15	Screw	Steel	1
16	Clamp	Steel	1
17	Screw	Steel	1
18	Nut	Steel	1
19	Seat	Brass	2