

Product Name: Heavy Duty PVC Cutter to 2" Pipe  
 Product #: 4682

## Removal of Blade



1. Remove Hex nut
2. Remove screw
3. Pull blade out to expose pin and clip
4. Remove pin and clip

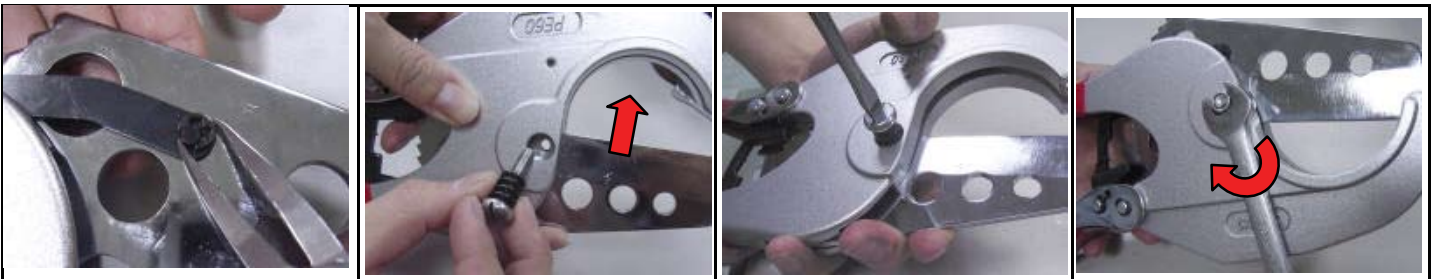


5. Remove blade

## Installation of Blade



1. Place all pieces in front of you
2. Push crank shaft through handle
3. Push blade into body to line up holes
4. Support back of blade to line up holes



5. Affix new blade with pin and clip
6. Insert tension screw into hole
7. Tighten tension screw
8. Tighten nut