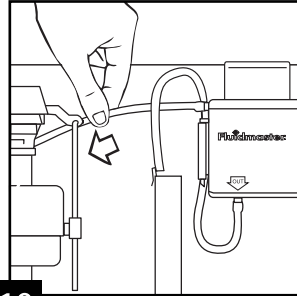


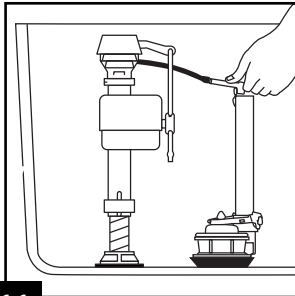
9.



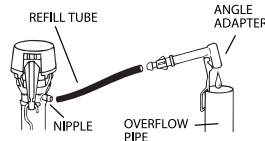
10.

9. With correct washers in place (see Step 8), tighten coupling nut. Hand tighten only. **DO NOT OVERTIGHTEN. CAUTION: DO NOT USE CONE WASHER WITH PLASTIC SUPPLY LINE.**

10. If you have a Fluidmaster bowl cleaning system, re-attach tube (1N") to fill valve nipple (see Diagram 2). Be sure toilet tank flushing components move freely (if you don't have a cleaning system, continue to Step 11).



11.



NOTE: Flow from refill tube must be positioned just above the overflow pipe.

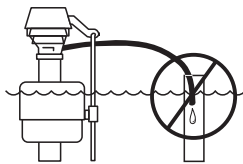
11. Remove and discard overflow pipe cap if present. Attach one end of black refill tube to angle adapter and the other end to nipple located near top of valve. Attach angle adapter to overflow pipe. Trim refill tube as necessary to prevent kinking. NOTE: Flow from refill tube must be positioned just above the overflow pipe. Do not insert refill tube down into overflow pipe below water level. This will siphon water down the overflow pipe, which causes the valve to turn on and off as it tries to keep the tank full. If the angle adapter cannot be used, you may need the Model 599 Refill Clamp (not included).

12. **IMPORTANT:** Always clear sand and rust from system. Make sure water supply is shut off. Remove valve TOP by lifting arm and rotating top and arm 1/8 turn counterclockwise, pressing down slightly on cap.

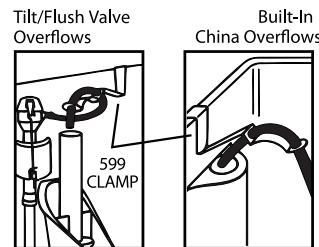
13. While holding a container over the uncapped VALVE to prevent splashing, turn water supply on and off a few times. Leave water supply off.

14. Replace TOP by engaging lugs and rotating 1/8 turn clockwise. **MAKE CERTAIN TOP IS TURNED TO THE LOCKED POSITION. VALVE MAY NOT TURN ON IF TOP IS NOT FULLY TO THE LOCKED POSITION.**

15. Turn on water supply. Adjust water to desired level by squeezing water level adjustment clip and moving FLOAT CUP up or down along stainless steel link. Check for leaks, then check for proper flush.



Do not insert refill tube down into overflow pipe below water level. This will siphon water down the overflow pipe, which causes the valve to turn on and off as it tries to keep the tank full.



If the angle adapter cannot be used, you may need the Model 599 Refill Clamp (not included).

### TROUBLESHOOTING

#### IF FILL VALVE WON'T TURN OFF,

- There may be debris at seat- repeat Steps 12-15.
- The seal inside the valve top may be damaged replace with genuine 242 seal.

#### IF FILL VALVE TURNS OFF AND ON DURING PERIODS OF NON-USE,

- There may be a leak at the flapper .
- The tank ball or flapper is misaligned - repeat Step 11.

NOTE: SAVE INSTRUCTION SHEET FOR FUTURE REFERENCE.

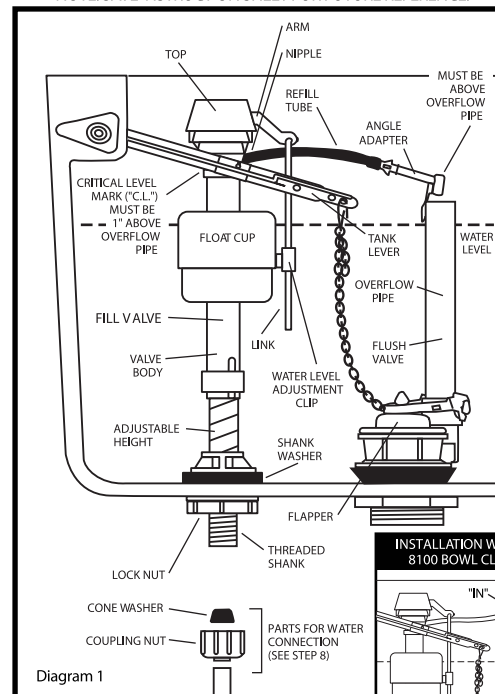
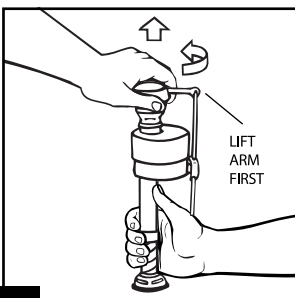
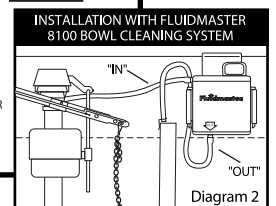


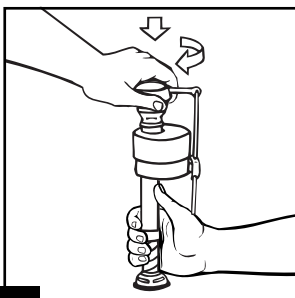
Diagram 1



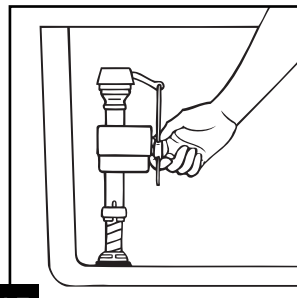
12.



13.



14.



15.