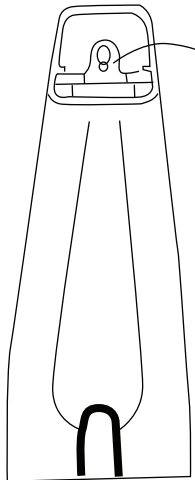
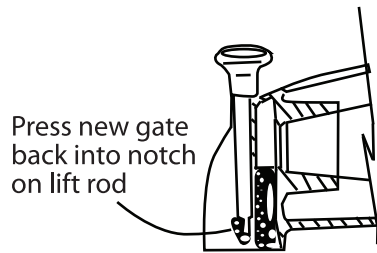
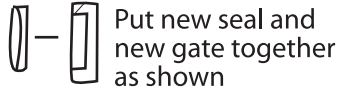


Product Name: Diverter Lift Replacement
Product #: 1109

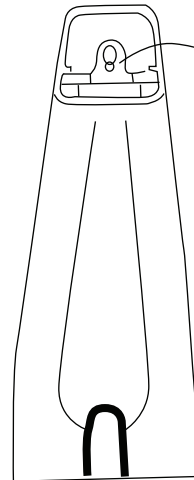


To remove old gate
use side cutters or
needle hose pliers to
bend or cut one leg away
from notch in lift rod

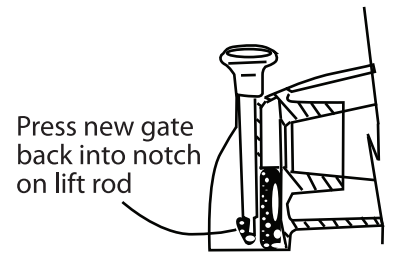


www.lyncar.com

Product Name: Diverter Lift Replacement
Product #: 1109

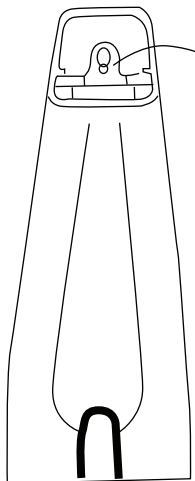


To remove old gate
use side cutters or
needle hose pliers to
bend or cut one leg away
from notch in lift rod

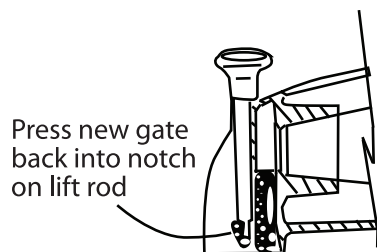


www.lyncar.com

Product Name: Diverter Lift Replacement
Product #: 1109

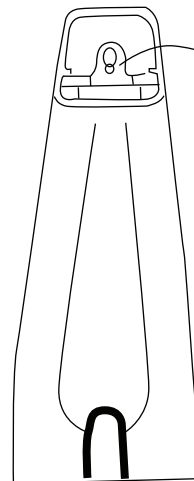


To remove old gate
use side cutters or
needle hose pliers to
bend or cut one leg away
from notch in lift rod

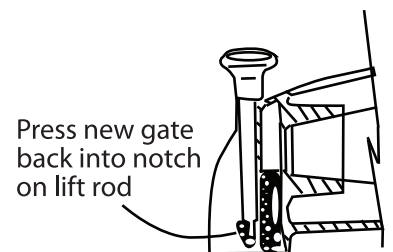
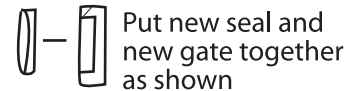


www.lyncar.com

Product Name: Diverter Lift Replacement
Product #: 1109



To remove old gate
use side cutters or
needle hose pliers to
bend or cut one leg away
from notch in lift rod



www.lyncar.com