

The BEST Plumbing Specialties. One Source.

**L-21**

**TEST PLUGS**

L

**TEST PLUG - SINGLE SURE TEST**



- Maximum Back Pressure
- Air: 10 PSIG
- Water: 30FT. Hd.
- Not sold with inflation hose

PART#	IPS SIZE	MAX DIAMETER	MAX INFLATION
4730	1-1/4" - 1-1/2"	1-3/4"	30 PSI
4731	2"	2-1/4"	30 PSI
4732	3"	3-1/4"	30 PSI
4733	4"	4-1/4"	30 PSI
4734	6"	6-1/4"	30 PSI
4735	8"	8-1/4"	25 PSI
4736	10"	10-1/4"	25 PSI
4737	12"	12-1/4"	25 PSI

**TEST PLUG - LONG SURE TEST**



- Maximum Back Pressure
- Air: 10 PSIG
- Water: 30FT. Hd.
- Sold with 2 ft. extension hose

PART#	IPS SIZE	MAX DIAMETER	MAX INFLATION
4743	2"	2-1/4"	30 PSI
4744	3"	3-1/4"	30 PSI
4745	4"	4-1/4"	30 PSI
4746	4" - 6"	6-1/4"	30 PSI

**EXTENSION HOSES**



- Tire pump connections
- 1/4" Male x 1/4" Female swivel
- Any length hose can be ordered
- Please call for quote

PART#	LENGTH
4759-2	2 ft.
4759-3	3 ft.
4759-4	4 ft.
4759-5	5 ft.
4759-6	6 ft.

**TEST PLUG - "SURE TEST" DUAL STAGE LONG**



- Maximum back pressure
- Air: 10 PSIG
- Water: 30FT. Hd
- Two-2Ft. hoses are molded as part of the plug
- Additional hose lengths may be required
- This 2-hose plug has twin chamber construction which allows the nose of the plug to be inflated or deflated separately from the back of the plug. This dual stage, 2 hose inflation deflation plug protects the contractor from test water overflow

PART#	IPS SIZE	MAX DIAMETER	MAX INFLATION
4739	2- 3"	3-1/4"	30 PSI
4740	3- 4"	4-1/4"	30 PSI

PLUMBER'S TOOLS

**L-22****SECTION L**Plumbers Tools  
Quality, Durability, Reliability**L****TEST PLUGS****TEST PLUG - NYLON EXPANSION**

- LYNCAR offers a low pressure nylon test plug available from 2" to 6" sizes
- These are a superior and versatile nylon plug that accommodate a wide variety of applications
- They are shatter proof, corrosion resistant, and can be easily cleaned for long use
- All wing nut plugs when tightened will expand to seal in the pipe
- The plugs are hollow, allowing water or gas to be injected or drained as required

PART #	SIZE	PSI
<b>R19027</b>	2"	30
<b>R19028</b>	3"	15
<b>R19029</b>	4"	15
<b>R19030</b>	5"	12
<b>R19031</b>	6"	10

**DRAIN CLEANER BLADDER****Part# 4624**

- Unclogs 1" - 2" drains
- Use for swimming pool lines, bathtubs & showers, bathroom sinks
- Works with 1-1/4" sink

**Part# 4625**

- Unclogs 1-1/2" - 3" drains
- Use for washing machine drains, bathtubs & showers, and kitchen sinks

**Part # 4626**

- Unclogs 3" - 6" drains
- Use for main drains, basement drains and outside sewer drains

PART#	DESCRIPTION
<b>4624</b>	Unclogs 1" - 2" drains
<b>4625</b>	Unclogs 1-1/2" - 3" drains
<b>4626</b>	Unclogs 3" - 6" drains

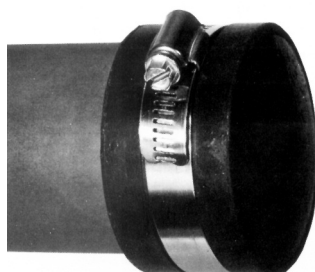
**PLUMBER'S TOOLS**

The BEST Plumbing Specialties. One Source.

**L-23****PLUMBERS TOOLS****TEST CAPS KNOCKOUT**

- Solvent weld to ABS or PVC DWV pipe
- Fits both sch. 40 as well as foam core DWV
- Sold in poly bags of 100 pcs

PART NUMBER	SIZE
<b>4842</b>	1-1/2"
<b>4843</b>	2"
<b>4844</b>	3"
<b>4845</b>	4"

**TEST CAP & CLEAN OUT**

- Fits plastic and hubless cast iron DWV pipe
- Made from high quality rubber with a stainless steel clamp
- Rubber has cross rib for extra strength and inside knurling grips pipe



PART #	SIZE
<b>4417</b>	1-1/2"
<b>4418</b>	2"
<b>4419</b>	3"
<b>4422</b>	4"
<b>4840</b>	5"
<b>4841</b>	6"

**TEST PLUG - CAST IRON**

- These test plugs are manufactured from cast iron, with a long test nipple and durable rubber seals

PART#	SIZE
<b>4605</b>	6"
<b>4606</b>	8"
<b>4607</b>	10"
<b>4608</b>	12"

**TEST PLUG - WING NUT ECONOMY**

- Designed with a rubber flange that grips the end of the pipe preventing slippage while tightening
- Red rubber body with plated steel top & bottom and wing nut
- 3" & 4" supplied with "Superfly" wing nut
- Use in plastic, cast iron, DWV. plumbing, pool & spa applications

PART#	SIZE
<b>4801</b>	1"
<b>4802</b>	1-1/4"
<b>4803</b>	1-1/2"
<b>4804</b>	2"
<b>4806</b>	3"
<b>4808</b>	4"

**PLUMBER'S TOOLS**

**L-24****SECTION L**Plumbers Tools  
Quality, Durability, Reliability**L****SAFE-T-SEAL BY G.T. WATER****SAFE-T-SEAL TEST PLUGS FITS 1-1/4 - 2" PIPE****part#4627****part#4628****part#4629****part#4630**

- G.T. WATER PRODUCTS has developed its SAFE-T-SEAL line with a concern for the consumer's safety. Test plugs are specifically used to pressure test water lines in new construction and in renovation projects.
- The SAFE-T-SEAL brand, as the name implies, has eliminated all of the negative, dangerous features associated with other major brands. SAFE-T-SEAL's distinctive features include: a safety valve to prevent over inflation or blow-out with built in pressure relief valves which are pre-set to release excess pressure through the plug valve; dual inflation capability gives the user the option of air or water; a waffle-patterned exterior to prevent the plug from slipping while in the pipe; two-stage deflation on long test plugs which eliminates back wash and flooding during deflation

PART#	DESCRIPTION
<b>4627</b>	Fits 1-1/4 - 2" pipe
<b>4628</b>	Fits 3" pipe
<b>4629</b>	Fits 3"- 4" pipe
<b>4630</b>	Fits 4"-6" pipe

**PLUMBER'S TOOLS**

The BEST Plumbing Specialties. One Source.

**L-25**

**TEST PLUGS & AUGERS**

**L**

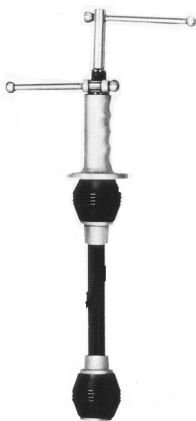
**EXPANDABLE TEST PLUGS G.T. WATER**



- Drain king, cleanout plugs
- No metal parts
- Easy to install and remove

PART#	SIZE	OEM#
<b>4833</b>	1-1/2"	MTP152
<b>4834</b>	2"	MTP202
<b>4835</b>	3"	MTP302
<b>4836</b>	4"	MTP402
<b>4837</b>	6"	MTP602

**TEST PLUG - FLEXIBLE ALL AMERICAN**



- The popular "All American" plug is made with two rubber balls and a non rusting aluminum casting
- They can easily be tightened by hand
- Flexible spring and cable
- Rubber balls provide a sure seal, and retains shape after constant use

PART#	SIZE
<b>4619AA</b>	1-1/2"
<b>4620AA</b>	2"
<b>4621AA</b>	3"
<b>4622AA</b>	4"
<b>4623AA</b>	6"
<b>4624AA</b>	8"

**HAND SPINNER DAHLE**



- A reliable stand-by hand spinner when working with tough kitchen and bathroom sink and bath/shower drains.
- Available with either 1/4", 5/16" cable or the very robust 3/8" cable
- Cable won't slip in chuck, yet easy to tighten/loosen
- Large handle is easy to grip
- Available in Bulb Head or Drop Head versions
- Available in either 10 ft. or 20 ft. length cables

PART#	DESCRIPTION
<b>982D3810</b>	1/4" x 10'
<b>982D3820</b>	1/4" x 20'
<b>982D40</b>	5/16" x 20' with bulb auger
<b>982D4038</b>	3/8" x 20' with bulb auger
<b>982D4038DH</b>	3/8" x 20' with drop head
<b>982D40DH</b>	5/16" x 20' with drop head

**PLUMBER'S TOOLS**